



Ampack

Our Products





Shrimp Ring Series

The Best
Packaging for
Shrimp Cocktail





Shrimp Ring Series

Our shrimp rings are easy to use and display, and are the best way to market your cocktail shrimps.

- Full Moon Serie
- Standing Full Moon Serie
- Standing Half Moon Serie
- Custom Shapes



Full Moon Series

The full moon shrimp tray - various in size, various in colors and various purposes! We also offer a variety of fresh and delicious appetizers to match your taste. All our products are made with care and love for your dining pleasure.



Simple Full Moon Benefits

- Withstand cold storage
- Double grip edge & Stack Friendly
- Leak-proof Design

Available Material:

Tray	Lid
PP, PS	PET, PVC

Material Fact Sheet:

Material	Freezable	Microwaveable	Approximate Temperature Range
PP	Yes	Yes	-40°C to 100°C
PS / PVC	Yes	No	-18 °C to 60°C
PET	Yes	No	-40°C to 60°C



Item No. SHR001_34

Total Portion : 10-11 OZ
Shrimp Size : 41/50

Item No.	Description	Material	Dimensions
SHR001_34550	Shrimp Tray	Ps Black / 0.60 Mm.	190 X 27
SHR001_34040-2	Water Tray	Ps Black / 0.40 Mm.	188 X 20
SHR001_34035-2	Lid	Pet Or Pvc / 0.35 Mm.	190 X 50

Item No. SHR002_65

Total Portion : 18 OZ
Shrimp Size : 41/50

Item No.	Description	Material	Dimensions
SHR002_65645	Shrimp Tray	PS Black / 0.45 mm.	190 x 22
SHR002_65040	Water Tray	PS Black / 0.40 mm.	188 x 20
SHR002_65035	Lid	PET or PVC / 0.35 mm.	190 x 50



Item No. SHR003_78

Total Portion : 10 OZ
Shrimp Size : 41/50

Item No.	Description	Material	Dimensions
SHR003_78550	Shrimp Tray	PS Black / 0.50 mm.	169 x 26
SHR003_78050-1	Water Tray	PS Black / 0.50 mm.	167 x 20
SHR003_78035	Lid	PET or PVC / 0.35 mm.	170 x 50



Item No. SHR004_55-4

Total Portion : 14-16 OZ
Shrimp Size : 41/50

Item No.	Description	Material	Dimensions
SHR004_55650-4	Shrimp Tray	PS Black / 0.50 mm.	224 x 26
SHR004_55040-1	Water Tray	PS Black / 0.40 mm.	220 x 20
SHR004_55035-1	Lid	PET or PVC / 0.35 mm.	224 x 53



Item No. SHR005_64

Total Portion : 14 OZ
Shrimp Size : 41/50

Item No.	Description	Material	Dimensions
SHR005_64650	Shrimp Tray	PS Black / 0.50 mm.	220 x 24
SHR0005_64050-1	Water Tray	PS Black / 0.50 mm.	220 x 17
SHR0005_64035	Lid	PET or PVC / 0.35 mm.	222 x 42

Item No. SHR006_47

Total Portion : 32 OZ
Shrimp Size : 41/50

Item No.	Description	Material	Dimensions
SHR006_471060	Shrimp Tray	PS Black / 0.60 mm.	315 x 35
SHR006_47050-3	Water Tray	PS Black / 0.50 mm.	305 x 18
SHR006_47040	Lid	PET or PVC / 0.40 mm.	315 x 67





Item No. SHR007_54

Total Portion : 12 OZ
Shrimp Size : 31/40

Item No.	Description	Material	Dimensions
SHR007_54550-3	Shrimp Tray	PS Black / 0.50 mm.	188 x 29
SHR007_54040-1	Water Tray	PS Black / 0.50 mm.	187 x 21
SHR007_54035-1	Lid	PET or PVC / 0.35 mm.	189 x 55

Item No. SHR008_50-2

Total Portion : 24 OZ
Shrimp Size : 21/25

Item No.	Description	Material	Dimensions
SHR008_50660-1	Shrimp Tray	PS Black / 0.60 mm.	260 x 36
SHR008_50050-1	Water Tray	PS Black / 0.50 mm.	250 x 36
SHR008_50040-2	Lid	PET or PVC / 0.40 mm.	260 x 270 x 65



Item No. SHR009_117

Total Portion : 16 OZ
Shrimp Size : 31/40

Item No.	Description	Material	Dimensions
SHR009_1171160	Shrimp Tray	PS Black / 0.60 mm.	256 x 45
SHR009_117040	Water Tray	PS Black / 0.40 mm.	254 x 18
SHR009_117040-1	Lid	PET or PVC / 0.40 mm.	256 x 39

Item No. SHR0010_121

Total Portion : 16 OZ

Shrimp Size : 21/25

Item No.	Description	Material	Dimensions
SHR0010_121850	Shrimp Tray	PS Black / 0.50 mm.	225 x 23.5
SHR0010_121040	Water Tray	PS Black / 0.40 mm.	221 x 18
SHR0010_121040	Lid	PET or PVC / 0.40 mm.	225 x 49



Item No. SHR0011_46-2

Total Portion : 18 OZ

Shrimp Size : 31/40

Item No.	Description	Material	Dimensions
SHR0011_46660-2	Shrimp Tray	PS Black / 0.60 mm.	244 x 23
SHR0011_46050-1	Water Tray	PS Black / 0.50 mm.	242 x 16
SHR0011_46040-5	Lid	PET or PVC / 0.40 mm.	244 x 52

New Arrival

Standing Full Moon Series

Ampack proudly introduces our all new standing packaging a new way to showcase the floating illusion for your shrimps. Our standing full moons can be placed vertically in your display case for an attractive and elegant presentation that will bring a smile to your customers face.



Simple Full Moon Benefits

- Full Size Vertical Standing Plate
- Double Grip Edges
- Stack Friendly

Available Material:

Tray

Lid

PP, PS

PET, PVC

Material Fact Sheet:

Material	Freezable	Microwaveable	Approximate Temperature Range
PP	Yes	Yes	-40°C to 100°C
PS / PVC	Yes	No	-18 °C to 60°C
PET	Yes	No	-40°C to 60°C

Item No. SHR0013_34-4

Total Portion : 10-11 OZ

Shrimp Size : 41/50

Item No.	Description	Material	Dimensions
SHR0013_34540-4	Shrimp Tray	PS Black / 0.40 mm.	190 x 22
SHR0013_34040-3	Water Tray	PS Black / 0.40 mm.	188 x 20
SHR0013_34035-5	Lid	PET or PVC / 0.35 mm.	190 x 190 x 50



Item No. SHR0014_78-1

Total Portion : 10 OZ

Shrimp Size : 61/70

Item No.	Description	Material	Dimensions
SHR0014_78550-1	Shrimp Tray	PS Black / 0.50 mm.	169 x 26
SHR0014_78050-1	Water Tray	PS Black / 0.50 mm.	167 x 20
SHR0014_78040-1	Lid	PET or PVC / 0.40 mm.	170 x 50

Item No. SHR0015_65-6

Total Portion : 18 OZ

Shrimp Size : 41/50

Item No.	Description	Material	Dimensions
SHR0015_65650-6	Shrimp Tray	PS Black / 0.50 mm.	262 x 262 x 22
SHR0015_65050-6	Water Tray	PS Black / 0.50 mm.	260 x 261 x 14
SHR0015_65050-5	Lid	PET or PVC / 0.50 mm.	264 x 264 x 42





Item No. SHR0016_54

Total Portion : 10-12 OZ
Shrimp Size : 31/40

Item No.	Description	Material	Dimensions
SHR0016_54550-2	Shrimp Tray	PS Black / 0.50 mm.	189 x 189 x 29
SHR0016_54040-1	Water Tray	PS Black / 0.40 mm.	187 x 21
SHR0016_54035-3	Lid	PET or PVC / 0.35 mm.	189 x 189 x 50

Item No. SHR0017_47-5

Total Portion : 32 OZ
Shrimp Size : 41/50

Item No.	Description	Material	Dimensions
SHR0017_471060-5	Shrimp Tray	PS Black / 0.60 mm.	315 x 315 x 35
SHR0017_47060-5	Water Tray	PS Black / .60 mm.	314 x 314 x 19
SHR0017_47060-5	Lid	PET or PVC / 0.60 mm.	315 x 315 x 68.5



Item No. SHR0018_113-1

Total Portion : 14-16 OZ
Shrimp Size : 41/50

Item No.	Description	Material	Dimensions
SHR0018_113450-1	Shrimp Tray	PS Black / 0.50 mm.	220 x 24
SHR0018_64050-1	Water Tray	PS Black / 0.50 mm.	220 x 17
SHR0018_113045-1	Lid	PET or PVC / 0.45 mm.	222 x 42

Item No. SHR0019_64-4

Total Portion : 14-16 OZ

Shrimp Size : 41/50

Item No.	Description	Material	Dimensions
SHR0019_64650-4	Shrimp Tray	PS Black / 0.50 mm.	220 x 220 x 25
SHR0019_64050-2	Water Tray	PS Black / 0.50 mm.	219 x 219.5 x 15
SHR0019_64045-4	Lid	PET or PVC / 0.45 mm.	220 x 220.5 x 41



Item No. SHR0020_64-5

Total Portion : 14-16 OZ

Shrimp Size : 41/50

Item No.	Description	Material	Dimensions
SHR0020_64650-5	Shrimp Tray	PS Black / 0.50 mm.	220 x 220 x 25
SHR0020_64050-2	Water Tray	PS Black / 0.50 mm.	219 x 219.5 x 15
SHR0020_64045-4	Lid	PET or PVC / 0.45 mm.	220 x 220.5 x 41

Standing Half Moon Series

With our standing half moon design your shrimp display has a new clean, bold and streamlined look. It will also let you show off some of your finest shrimp in the best way possible.



Standing Half Moon Benefits

- Vertical and Horizontal Dual Display
- Double Grip Edges
- Stack Friendly

Available Material:

Tray	Lid
PP, PS	PET, PVC

Material Fact Sheet:

Material	Freezable	Microwaveable	Approximate Temperature Range
PP	Yes	Yes	-40°C to 100°C
PS / PVC	Yes	No	-18 °C to 60°C
PET	Yes	No	-40°C to 60°C

Item No. SHRO021_87

Total Portion : 19 OZ

Shrimp Size : 21/30

Item No.	Description	Material	Dimensions
SHRO021_87850-1	Shrimp Tray	PS Black / 0.50 mm.	196 x 282 x 28
SHRO021_87050	Water Tray	PS Black / 0.50 mm.	195 x 282 x 16
SHRO021_87045-1	Lid	PET or PVC / 0.45 mm.	198 x 285 x 47



Item No. SHRO022_103

Total Portion : 11 OZ

Shrimp Size : 41/50

Item No.	Description	Material	Dimensions
SHRO022_103550	Shrimp Tray	PS Black / 0.50 mm.	156 x 190 x 29
SHRO022_103040	Water Tray	PS Black / 0.40 mm.	155 x 188 x 19
SHRO022_103035	Lid	PET or PVC / 0.35 mm.	157 x 190 x 48



Item No. SHR0023_104

Total Portion : 17 OZ
Shrimp Size : 41/50

Item No.	Description	Material	Dimensions
SHR0023_104760	Shrimp Tray	PS Black / 0.60 mm.	205 x 258 x 30
SHR0023_104050	Water Tray	PS Black / 0.50 mm.	205 x 258 x 20
SHR0023_104045	Lid	PET or PVC / 0.45 mm.	205 x 258 x 50

Item No. SHR0024_105

Total Portion : 25.2 OZ
Shrimp Size : 41/50

Item No.	Description	Material	Dimensions
SHR0024_105860	Shrimp Tray	PS Black / 0.60 mm.	231 x 329 x 28
SHR0024_105050	Water Tray	PS Black / 0.50 mm.	227 x 327 x 22
SHR0024_105045	Lid	PET or PVC / 0.45 mm.	231 x 329 x 46



Item No. SHRO025_102

Total Portion : 8 OZ

Shrimp Size : 31/40

Item No.	Description	Material	Dimensions
SHRO025_102450	Shrimp Tray	PS Black / 0.45 mm.	156 x 212 x 28
SHRO025_102050	Water Tray	PS Black / 0.50 mm.	156 x 212 x 21
SHRO025_102040	Lid	PET or PVC / 0.40 mm.	156 x 212 x 50



Item No. SHRO026_88

Total Portion : 20 OZ

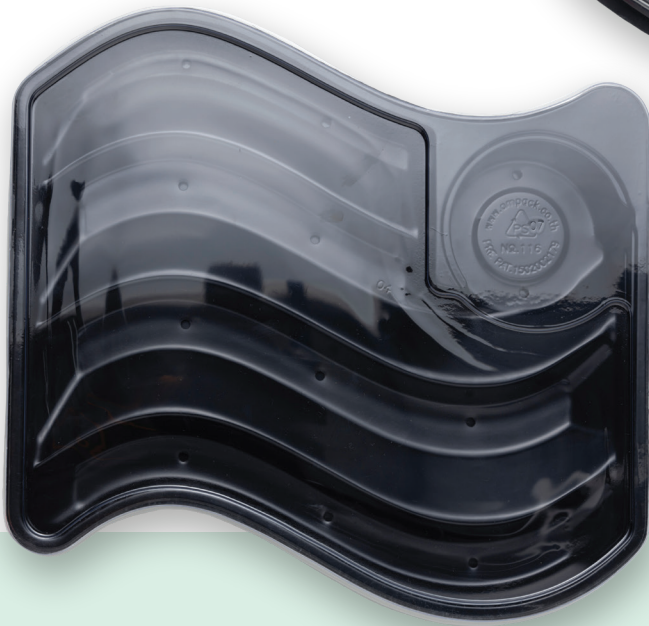
Shrimp Size : 26/30

Item No.	Description	Material	Dimensions
SHRO026_88660	Shrimp Tray	PS Black / 0.60 mm.	225 x 310 x 34
SHRO026_88050	Water Tray	PS Black / 0.50 mm.	225 x 310 x 23
SHRO026_88045	Lid	PET or PVC / 0.45 mm.	225 x 310 x 57

Custom Shape

Let us help you add a touch of originality to your product. Ampack provides custom design thermoplastic packaging that's as unique as your brand. No matter the season or occasion, our packaging will make your customer smile.







Item No. SHRO030_DIAMOND RING

Total Portion : 14-16 OZ
Shrimp Size : 41/50

Item No.	Description	Material	Dimensions
SHRO030_Diamond Ring.50	Shrimp Tray	PS Black / 0.50 mm.	203 x 203 x 25
SHRO030_Diamond Ring.50	Water Tray	PS Black / 0.50 mm.	203 x 203 x 16
SHRO030_Diamond Ring.45	Lid	PET or PVC / 0.45 mm.	203 x 203 x 49

Item No. SHRO029_120 RUGBY

Total Portion : 22 OZ
Shrimp Size : 26/30

Item No.	Description	Material	Dimensions
SHRO029_1201360	Shrimp Tray	PS Black / 0.60 mm.	272 x 363 x 37
SHRO029_120050	Water Tray	PS Black / 0.50 mm.	269 x 360 x 21
SHRO029_120040	Lid	PET or PVC / 0.40 mm.	273 x 365 x 62



Item No. SHRO028_112 OVAL

Total Portion : 21.8 OZ
Shrimp Size : 41/50



Item No.	Description	Material	Dimensions
SHRO028_112660	Shrimp Tray	PS Black / 0.50 mm.	208 x 323 x 29
SHRO028_112050	Water Tray	PS Black / 0.50 mm.	208 x 323 x 20
SHRO028_112040	Lid	PET or PVC / 0.45 mm.	208 x 323 x 46

Item No. SHRO031_116 RIBBON

Total Portion : 24 OZ

Shrimp Size : 31/40

Item No.	Description	Material	Dimensions
SHRO031_1161280	Shrimp Tray	PS Black / 0.80 mm.	246 x 315 x 43
SHRO031_116080	Water Tray	PS Black / 0.80 mm.	243 x 309 x 49
SHRO031_116040	Lid	PET or PVC / 0.40 mm.	248 x 318 x 9



Item No. SHRO027_737

Total Portion : 1-5 OZ

Shrimp Size : 61/80

Item No.	Description	Material	Dimensions
SHRO027_737	Shrimp Tray	PP / Color / 0.60 mm.	95 x 192 x 41

Shrimp Tray

Our shrimp tray lets you create perfectly shaped and even batches with ease.



Our shrimp trays are great ways to present your Ebi/Breaded shrimp. These practical and functional shrimp trays are microwave & freezer safe. This patented design allows you to display the shrimp beautifully and offers great tilting action in both directions of the tray allowing everyone to see each individual shrimp.

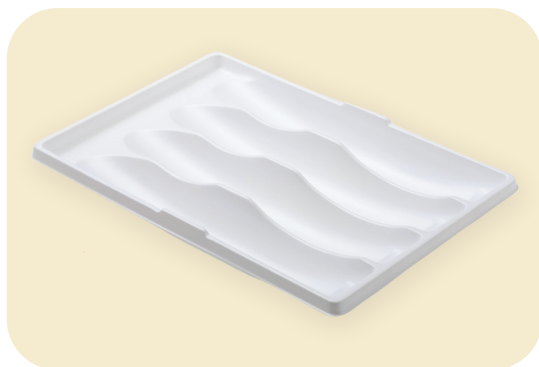
Available Material:

Tray

PP, PS

Material Fact Sheet:

Material	Freezable	Microwaveable	Approximate Temperature Range
PP	Yes	Yes	-40°C to 100°C
PS	Yes	No	-18 °C to 60°C



Item No. EBI001_662

Material	Dimensions	Packaging Case
PS	157x229x28	1,000



Item No. EBI002_369

Material	Dimensions	Packaging Case
PP	170x191x25	300



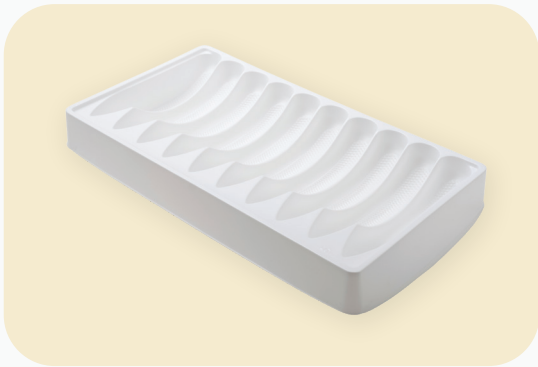
Item No. EBI003_639

Material	Dimensions	Packaging Case
PP	147x237x24	400



Item No. EBI004_137

Material	Dimensions	Packaging Case
PP	202x181x32	250



Item No. EBI005_209

Material	Dimensions	Packaging Case
PP	173x308x35	300



Item No. EBI006_274

Material	Dimensions	Packaging Case
PP	188x285x33	200



Item No. EBI007_325_1

Material	Dimensions	Packaging Case
PP	167x197x25	400



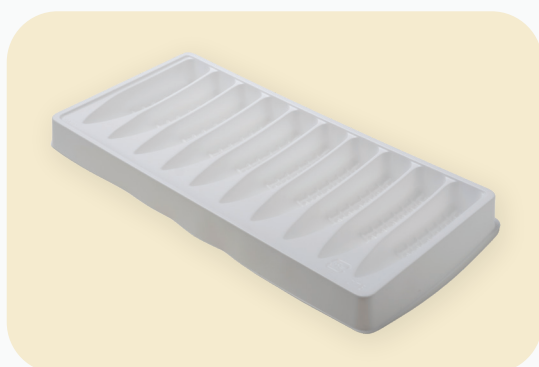
Item No. EBI008_854

Material	Dimensions	Packaging Case
PP	157x285x33	250



Item No. EBI009_942

Material	Dimensions	Packaging Case
PP	188x340x26	400



Item No. EBI0010_078/5

Material	Dimensions	Packaging Case
PP	157x312x25	400



Item No. EBI0011_K-116-17

Material	Dimensions	Packaging Case
PP	144x244x25	500



Item No. EBI0012_698

Material	Dimensions	Packaging Case
PP	148x296x28	300

Ready Meal

Make life easier and better with our ready meal packages. Crafted to accommodate human's needs to satisfy and meet different lifestyles.



Our ready meal packages are designed to accommodate the demand for instant, convenient food. Function and design are key features that ensure these meals provide both convenience and satisfaction. We will continue to lead the market by analyzing changing markets, thereby creating products that make people's lives easier.

Available Material:

Tray	Lid
PP	PET

Material Fact Sheet:

Material	Freezable	Microwaveable	Approximate Temperature Range
PP	Yes	Yes	-40°C to 100°C
PET	Yes	No	-40°C to 60°C



Item No. RTE001_943

Material	PP
Dimensions	Tray: 124x178x39 Lid: 128.5x182.5x7
Packaging Case	Tray: 300 Lid: 360



Item No. RTE002_715

Material	Tray: PP / Lid: PET
Dimensions	Tray: 158x207x28 Lid: 160x210x30
Packaging Case	Tray: 400 Lid: 200



Item No. RTE003_375

Material	PP
Dimensions	Tray: 145x225x32 Lid: 151x229x9
Packaging Case	150



Item No. RTE004_740

Material	PP
Dimensions	138x216x35
Packaging Case	320



Item No. RTE005_673

Material	PP
Dimensions	136x216x34
Packaging Case	450



Item No. RTE006_442

Material	PP
Dimensions	Tray: 122x167x40 Lid: 126x171x9
Packaging Case	Tray: 400 Lid: 300



Item No. RTE007_622

Material	PP
Dimensions	Tray: 129x197x47 Lid: 132x200x10
Packaging Case	Tray: 600 Lid: 450



Item No. RTE008_559-1

Material	PP
Dimensions	153x188x39
Packaging Case	400



Item No. RTE009_672

Material	PP
Dimensions	136x216x37
Packaging Case	400



Item No. RTE010_701

Material	PP
Dimensions	135x170x40
Packaging Case	300



Item No. RTE011_741

Material	PP
Dimensions	138x216x35
Packaging Case	320



Item No. RTE012_736

Material	PP
Dimensions	173x236x39
Packaging Case	240



Item No. RTE013_735

Material	PP
Dimensions	173x236x39
Packaging Case	600



Item No. RTE014_377

Material	PP
Dimensions	Tray: 123x191x37 Lid: 126x194x10
Packaging Case	300



Item No. RTE015_527

Material	PP
Dimensions	Tray: 130x174x44 Lid: 133x178x9
Packaging Case	400



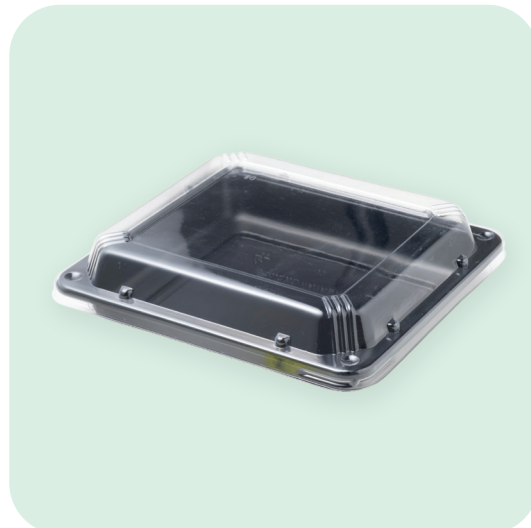
Item No. RTE016_480

Material	PP
Dimensions	Bowl: 145x163x51 Lid: 149x167x8
Packaging Case	Bowl: 320 Lid: 160



Item No. RTE017_430

Material	PP
Dimensions	Tray: 129x197x45 Lid: 132x200x10
Packaging Case	360



Item No. RTE018_708

Material	Tray: PP / Lid: PET
Dimensions	Tray: 179x198x29 Lid: 182x201x31
Packaging Case	Tray: 400 Lid: 250



Item No. RTE019_599

Material	PP
Dimensions	Bowl: 170x66 Lid: 179x20
Packaging Case	300



Item No. RTE020_642

Material	PP
Dimensions	Bowl: 151x60 Lid: 157x8
Packaging Case	240



Item No. RTE021_897

Material	Bowl: PP / Lid: PET
Dimensions	Bowl: 171x62 Lid: 174x21
Packaging Case	180



Item No. RTE022_935

Material	Tray: PP / Lid: PET
Dimensions	Tray: 154x216x39 Lid: 154x216x5.5
Packaging Case	200



Item No. RTE023_498

Material	PP
Dimensions	Tray: 121x182x46 Lid: 125x185x9
Packaging Case	360



Item No. RTE026_285-1

Material	Tray: PP / Lid: PVC
Dimensions	Tray: 125x178x50 Lid: 127x180x19
Packaging Case	750



Item No. RTE029_530

Material	Tray: PP / Lid: PET
Dimensions	Tray: 131x180x22 Lid: 131x180x23
Packaging Case	240



Item No. RTE027_365

Material	PP
Dimensions	Tray: 116x121x39 Lid: 121x126x10
Packaging Case	600



Item No. RTE028_612

Material	PP
Dimensions	Tray: 121x149x50 Lid: 124x151x9
Packaging Case	600

Meat & Poultry Tray

Our trays are just the right fit for packaging, serving and storing your deli meats, poultry and all kinds of other food products.



Our meat and poultry trays are great ways to present the desire protein in your meal, or the item that you want to be at the center of attention. From a succulent cut of meat to a fragrant portion of chicken breast, our meat trays are perfect for making a meal look mouth-wateringly delicious.

Available Material:

Tray

PP, PET

Material Fact Sheet:

Material	Freezable	Microwaveable	Approximate Temperature Range
PP	Yes	Yes	-40°C to 100°C
PET	Yes	No	-40°C to 60°C



Item No. MNP001_840

Material	PP
Dimensions	169x245x30
Packaging Case	900



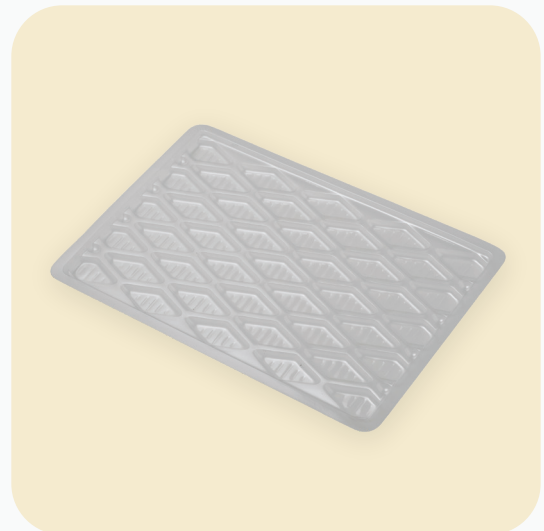
Item No. MNP002_938

Material	PP
Dimensions	150x268x30
Packaging Case	200



Item No. MNP003_607

Material	PP
Dimensions	120x200x17
Packaging Case	450



Item No. MNP004_852

Material	PET
Dimensions	180x260x10
Packaging Case	800



Item No. MNP005_776

Material	PP
Dimensions	155x202x20
Packaging Case	840



Item No. MNP006_664-1

Material	PP
Dimensions	134x189x35
Packaging Case	960



Item No. MNP007_493

Material	PP
Dimensions	105x191x13
Packaging Case	600



Item No. MNP008_180

Material	PET
Dimensions	162x242x16
Packaging Case	700



Item No. MNP009_410

Material	PP
Dimensions	180x226x13
Packaging Case	400



Item No. MNP010_912

Material	PP
Dimensions	149x268x18
Packaging Case	400



Item No. MNP011_808

Material	PP
Dimensions	140x195x44
Packaging Case	450



Item No. MNP012_667

Material	PP
Dimensions	135x190x20
Packaging Case	800

Snack & Bakery Tray

Put your baked goods in the spotlight with our snack & bakery trays. These lightweight and stackable trays are available in several sizes, so you'll always find the right fit for your medium or large batch of treats.

Our snack and bakery trays are the perfect way to present a variety of your products. Great to use in conjunction with fresh buns, your confections or baked goods. The unique interior compartmentalization allows for easy serving of snacks and side dishes.

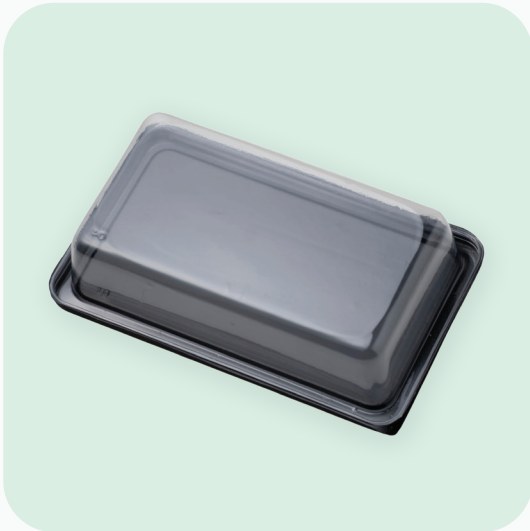
Available Material:

Tray

PP, PS, PET

Material Fact Sheet:

Material	Freezable	Microwaveable	Approximate Temperature Range
PP	Yes	Yes	-40°C to 100°C
PS	Yes	No	-18 °C to 60°C
PET	Yes	No	-40°C to 60°C



Item No. SNB001_675-1

Material	PP
Dimensions	99.5x70
Packaging Case	480



Item No. SNB002_707

Material	PET
Dimensions	185x228x48
Packaging Case	300



Item No. SNB003_663

Material	PP
Dimensions	89x166x33
Packaging Case	600



Item No. SNB004_557

Material	PP
Dimensions	102x149x32
Packaging Case	900



Item No. SNB005_760

Material	Dimensions	Packaging Case
PET	127x127x38	720



Item No. SNB006_606

Material	Dimensions	Packaging Case
PET	78.3 /IN67x213/IN198x47.4	900



Item No. SNB007_706

Material	Dimensions	Packaging Case
PP	97.5x192.5x29	450



Item No. SNB008_EX02

Material	Dimensions	Packaging Case
PP	130x170x25	450



Item No. SNB009_412

Material	Dimensions	Packaging Case
PP	113x156x40	390



Item No. SNB010_604

Material	Dimensions	Packaging Case
PP	166x204x35	300



Item No. SNB012_746

Material	Dimensions	Packaging Case
PP	130x187x35.5	800



Item No. SNB013_790

Material	Dimensions	Packaging Case
PP	123x153x37	400



Item No. SNB014_408

Material	Dimensions	Packaging Case
PP	90x210x40	480



Item No. SNB015_425

Material	Dimensions	Packaging Case
PET	128x128x30	600



Item No. SNB016_486

Material	Dimensions	Packaging Case
PP	170x182x39	250



Item No. SNB017_748

Material	Dimensions	Packaging Case
PP	90x164x32	700



Item No. SNB018_575

Material	Dimensions	Packaging Case
PET	110x110x30	2,250



Item No. SNB019_660

Material	Dimensions	Packaging Case
PP	93x152x32	1,800



Item No. SNB020_421

Material	Dimensions	Packaging Case
PP	87x130x33	1,800



Item No. SNB021_788

Material	Dimensions	Packaging Case
PET	118.5x118.5x30	3,000



Item No. SNB022_388

Material	Dimensions	Packaging Case
PP	101x150x32	600



Item No. SNB023_462

Material	Dimensions	Packaging Case
PP	63x177x52	600



Item No. SNB024_417

Material	Dimensions	Packaging Case
PP	107x157x28	900



Item No. 636

Material	Dimensions	Packaging Case
PET	120x154x15	900

Fruit & Vegetable

Our fruit and vegetable trays have been specially designed to keep your produce safe and help it get from here to there —no matter how you're transporting it.



When we say our fruit and vegetable trays are great, we mean they're the best way to package and protect your produce. Durable and convenient, these trays come in a variety of shapes and sizes so they can fit comfortably on any shelf. Get your goods where they need to go with these sturdy and stackable fruit and vegetable trays.

Available Material:

Tray

PP, PS, PET

Material Fact Sheet:

Material	Freezable	Approximate Temperature Range
PP	Yes	-40°C to 100°C
PS	Yes	-18 °C to 60°C
PET	Yes	-40°C to 60°C



Item No. VNFO01_276

Material	Dimensions	Packaging Case
PP	Tray: 153x153x30 Lid: 156x156x27	Tray: 1000 / Lid: 500



Item No. VNFO02_233

Material	Dimensions	Packaging Case
PS	129x129x20	1,200



Item No. VNFO03_244

Material	Dimensions	Packaging Case
PET	169x180x52	320



Item No. VNFO04_901

Material	Dimensions	Packaging Case
PET	207x422x80	200



Item No. VNF005_T21

Material	Dimensions	Packaging Case
PP	120x175x16	1,000



Item No. VNF006_T001

Material	Dimensions	Packaging Case
PP / PS	PP129x174x24 PS130x176x24	1,200



Item No. VNF007_118

Material	Dimensions	Packaging Case
PP / PS	140x200x20	300



Item No. VNF008_580

Material	Dimensions	Packaging Case
PET	Tray: 138x138x32 Lid: 141x141x20	750



Item No. VNF009_778

Material	Dimensions	Packaging Case
PP	171x64	360



Item No. VNF010_001

Material	Dimensions	Packaging Case
PET	176x50 / 157x23 / 175x17.5	-



Item No. VNF011_902

Material	Dimensions	Packaging Case
PET	Tray: 179x179x60 Lid: 179x179x10	Tray: 200 / Lid: 400



Item No. VNF012_198

Material	Dimensions	Packaging Case
PET / PS / PP	132x175x24	600



Item No. VNF013_657

Material	Dimensions	Packaging Case
PP	99.5x70	80



Item No. T001_B

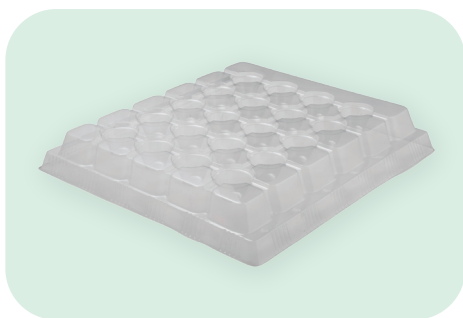
Material	Dimensions	Packaging Case
PP	129x174x24	600

Egg Tray

Made with hinged lid and easy-to-wash clear plastic shell, our egg trays are made out of high-quality plastic, and fit perfectly in your fridge door to keep eggs cold, fresh, and easy to access.

Define Your Needs

Number Of Eggs	Egg Size	Item Dimensions	Packing
<input type="checkbox"/> 6 <input type="checkbox"/> 10	<input type="checkbox"/> S <input type="checkbox"/> M ~53g 53-63g	Length (Mm) x Width (Mm) x Height (Mm)	Number Of Items Per Pack.
<input type="checkbox"/> 12 <input type="checkbox"/> 15	<input type="checkbox"/> L <input type="checkbox"/> XL 63+72g 72+g		
<input type="checkbox"/> 18 <input type="checkbox"/> 20			
<input type="checkbox"/> 24 <input type="checkbox"/> 30			



Item No. EGG001_589-1

Material	Dimensions	Packaging Case
PET	284x296x43	300



Item No. EGG002_440-1

Material	Dimensions	Packaging Case
PS	222x253x42	300



Item No. EGG003_441-1

Material	Dimensions	Packaging Case
PS	158x224x43	600



Item No. EGG004_795

Material	Dimensions	Packaging Case
PS	169x240x47	600



Item No. EGG005_867

Material	Dimensions	Packaging Case
PS	244x283x78	100